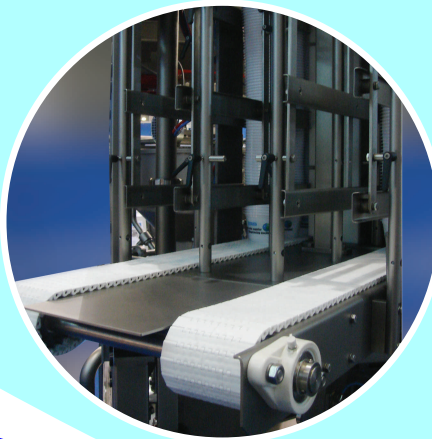
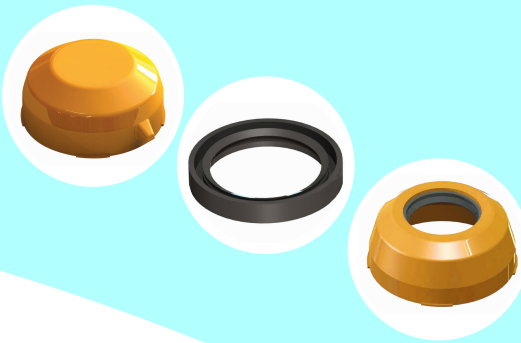
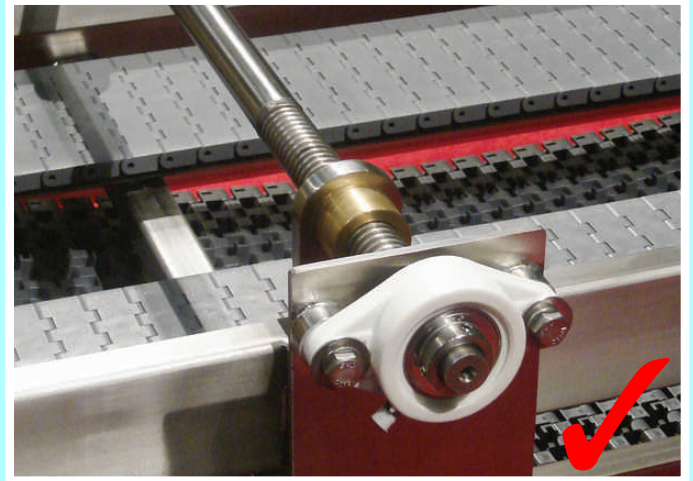
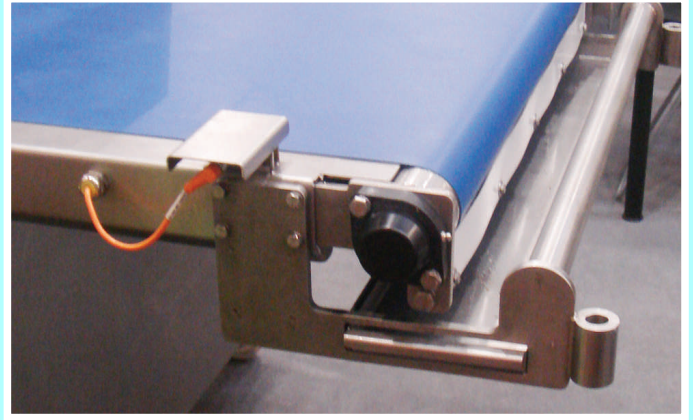
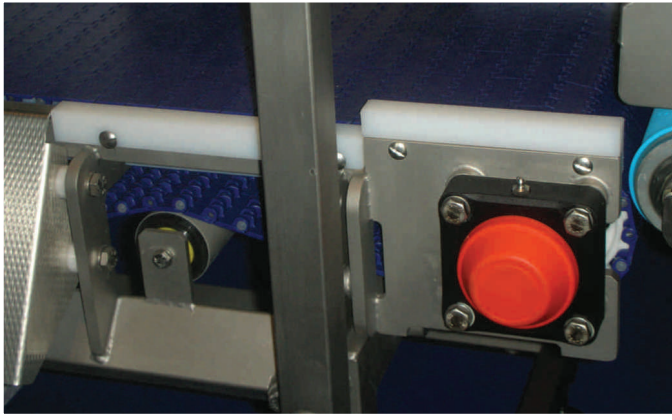




ÇAĞRI®
ENDÜSTRİ A.Ş.

ALHAN®



**RULMAN YATAKLARI
BEARING INSERT
Stok Kod Stock Code**

✓ 246 HPL 205	✓ 246 PPL 205
✓ 246 HPL 206	✓ 246 PPL 206
✓ 246 HPL 207	✓ 246 PPL 207
✓ 246 HPL 208	✓ 246 PPL 208
✓ 246 FBL 204	✓ 246 FPL 205
✓ 246 FBL 205	✓ 246 FPL 206
✓ 246 FBL 206	✓ 246 FPL 207
✓ 246 FBL 207	✓ 246 FPL 208
✓ 246 TPL 205	✓ 246 NFL 205
✓ 246 TPL 206	✓ 246 NFL 206
✓ 246 TPL 207	✓ 246 NFL 207
✓ 246 TPL 208	✓ 246 NFL 208



ÇAĞRI®
ENDÜSTRİ A.Ş.

Davutpaşa Cad. Nu: 14/1
34010 Topkapı - İSTANBUL - TÜRKİYE
Tel.: +90 212.444 00 42 - 544 50 55
Belgegeçer(Fax): +90 212. 567 14 16 - 501 54 08
e-posta (e-mail): info@alhan-cagri.com

www.alhan-cagri.com



ÇAĞRI[®]
ENDÜSTRİ A.Ş.

ALHAN[®]

PLASTİK RULMAN YATAKLARI/PLASTIC BEARING HOUSING

KAZANÇLAR/FEATURES

- ◆ Paslanma, Çüreme, Aşınma olmaz /No corrosion
- ◆ FDA-FSDA onaylı/FDA & FSDA approval
- ◆ Standart döküm yataklar ile aynı ölçülerde /Interchangeable with cast iron standards units
- ◆ Bakım gerektirmez/Maintenance free
- ◆ Sıcaklık aralığı: -35 ile 102°/ Temperature work from -35 to 102 degree
- ◆ Kopmadaki gerilme dayanımı (ASTM 0630) mükemmel! 17300 PSI
Tensile strength at break (ASTM 06300) is an impressive 17.300 PSI
- ◆ Mükemmel mekanik dayanım kararlılığı ve ölçü değişmezliği/Excellent mechanical strength stiffness & dimension stability
- ◆ İstenirse paslanmaz yağdanlık (gresörlük) ve burç/Option stainless greaser and bushing
- ◆ Kararlı geometrisinin hammaddesi; Bakteri ve kir türemesine engel/Solid base prevent dirt & bacteria Reluable

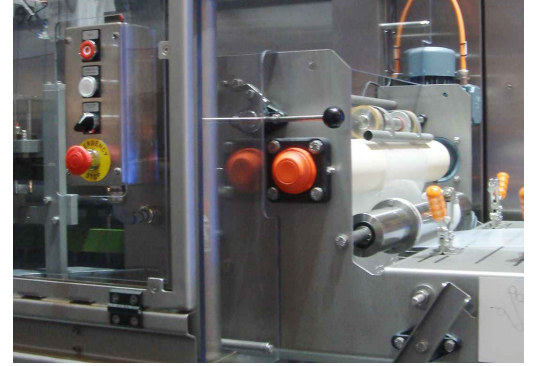


★ **Döküm yataklardan %30 daha kuvvetli yüklere dayanır.**
More them %30 powerfull from cast housing for loading.



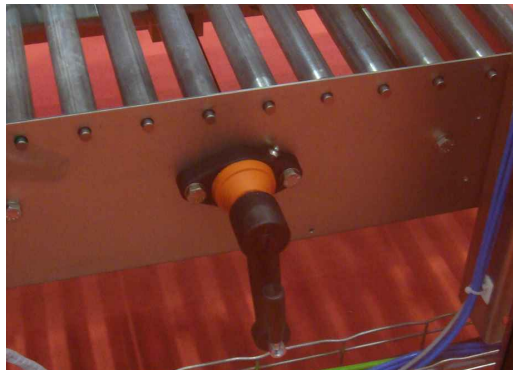
HPL RULMAN YATAKLARI/BEARING INSERTS

M PBT+GF



FBL RULMAN YATAKLARI/BEARING INSERTS

M PBT+GF

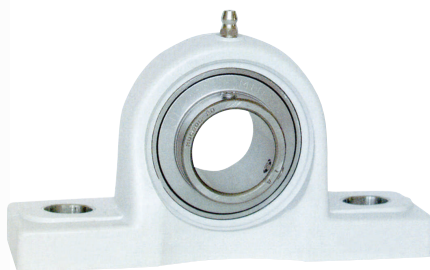


RULMAN YATAKLARI/BEARING INSERTS

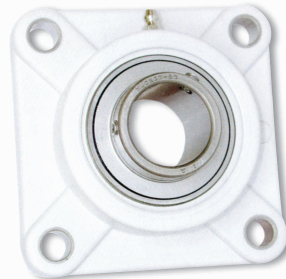
M PBT+GF



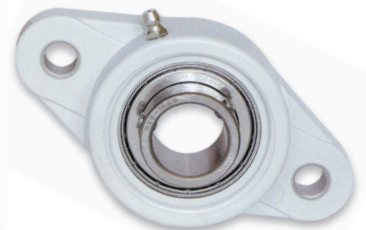
TPL



PPL



FPL



NFL